



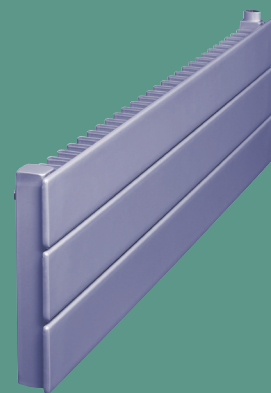
PANEL RADIATORS

ARCHITECTURALLY DISTINCTIVE

Panel Radiators combine the superiority of radiant heating with graceful architectural design. These sleek, stunning panels are popular in Europe as well as in prestigious commercial applications throughout North America. They can be used as a primary heating system or to supplement traditional heating.

Seven Standard Models

are available for any heating requirement, including wall or pedestal mounting to complete the architectural appeal. A durable hard coat baked powder enamel finish can be selected to match your décor.



Type PRF

Decorator Designed Styles

Available in base-perimeter horizontal flat tube design with either wall or pedestal mounting or vertical flat tube for either wall or ceiling mounting. All of the panel radiator models are designed to complement traditional or contemporary decor.

Energy Efficient

Flat radiating surfaces reduce energy consumption by providing high comfort levels at low thermostat settings.



Assortment of Attractive Colors

Nine standard colors and many optional architectural colors make Panel Radiators an interior designer's dream. Custom color matching is also available.

Space Saving

Single header radiator panels are only 1-5/8 inches wide and project only 2 inches from the wall. They are designed not to interfere with the placement of furniture or window treatments.

Protective Finish

Panel Radiators are powder-coated to provide an attractive finish that resists scuffs, scratches and marring.

Durable

Rugged heavy-gauge, all welded-steel construction ensures long service life under the most demanding commercial conditions. Panel Radiator pressure ratings are as follows:

STANDARD: LOW – Operating pressure - 56 PSI maximum, Test pressure - 74 PSI maximum

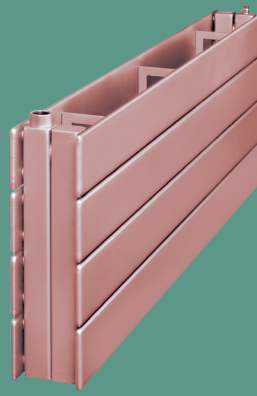
OPTIONAL: HIGH - Operating pressure - 128 PSI maximum, Test Pressure - 184 PSI maximum



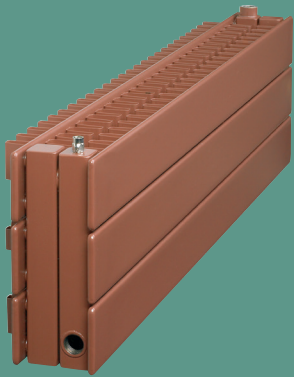
Type PR2F



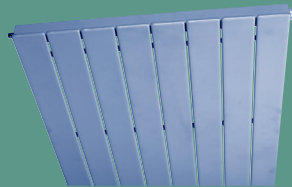
Type PR



Type PR2



Type PR3F



Type PRC



Type PRV

- Base-perimeter style Panel Radiators are available in lengths from two to twenty feet to fit the layout and heating needs of any room.
- Vertical-mounted panels add a decorative touch that other heating methods cannot duplicate.
- Ceiling mounted radiant panels can offset the chilly air in walk ways, hallways, stair wells and many other locations that other heating devices can't.
- Versatility and beauty is provided in many different ways with the Panel Radiators.

Comfort

Panel Radiators provide a comfortable blanket of radiant warmth. A typical installation of panel radiators offers a system that operates quietly and gently warms the occupants with the radiant effect provided by the flat tube panel radiator design.

Energy Efficiency

Panel Radiators provide significantly reduced energy consumption when compared to forced air heating systems. Panel radiators operate extremely well with low temperature condensing boilers.

Style

The narrow panel design allows them to be integrated into any interior design giving the Architect a full range of freedom to provide the client exactly what they want. The panel radiator models work with any

décor and can be used to make any kind of statement, from subdued to bright and bold. They can be installed low and continuous below windows or segmented for bay windows. To maximize space savings, they can also be mounted on ceilings or vertical on walls with tall, narrow panels. Panel Radiators are available in nine standard finishes and many architectural colors.

Versatility

Panel Radiators are suitable for individual room heating loads or can be integrated with other hydronic heating equipment in the room. Panel Radiators are manufactured from 2'-0" to 20'-0" long in 2" increments. The BTU outputs per foot span from a mere 100 to an incredible 5700. Depending on the models chosen, these panel radiators can provide heat for a myriad of required room heat loads.

Durability

Made of all welded steel, Panel Radiators are "built to outlast the building." They can be used to replace cast iron radiators used on hot water systems.

Quick Installation

Single-piece, modular construction makes the radiators easy to configure and install. By design, all plumbing connections are concealed.

Easy to Clean and Maintain

Panel Radiators do not trap or burn-in dust. They are easy to clean and provide clearance underneath to keep floors dust-free.



Clean, Quiet, Comfortable Heat

Panel Radiators provide an exceptionally silent blanket of even heat. There are no drafts or hot and cold spots. Noisy gusts of blowing air that spread dust and allergens are eliminated.



Design Versatility

Panel Radiators provide attractive and efficient heating options where wall space is limited.



Variety is Key of Design

Panel Radiators can fit in restricted as well as open, accessible areas. Matching accessories are available to complete the installation.

Vulcan
R A D I A T O R

260 North Elm Street • Westfield, MA 01085

Tel: 413-568-9571

www.vulcanrad.com



A MESTEK COMPANY